

PT8420 Installation Instructions

updated 3.19.07

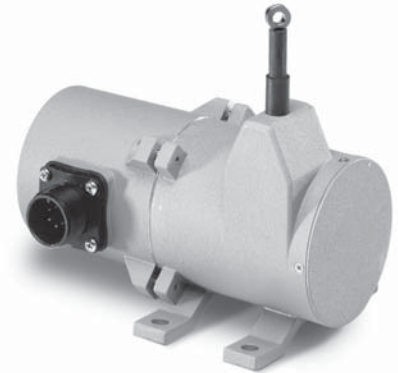


WARNING

Do not free release measuring cable!

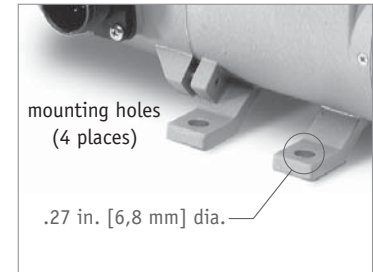
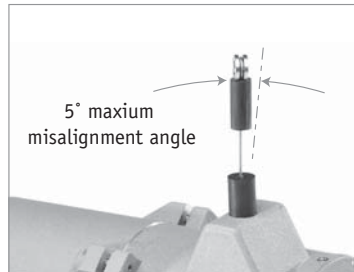
Do not over extend measuring cable!

Limit misalignment to 5° maximum!



MECHANICAL

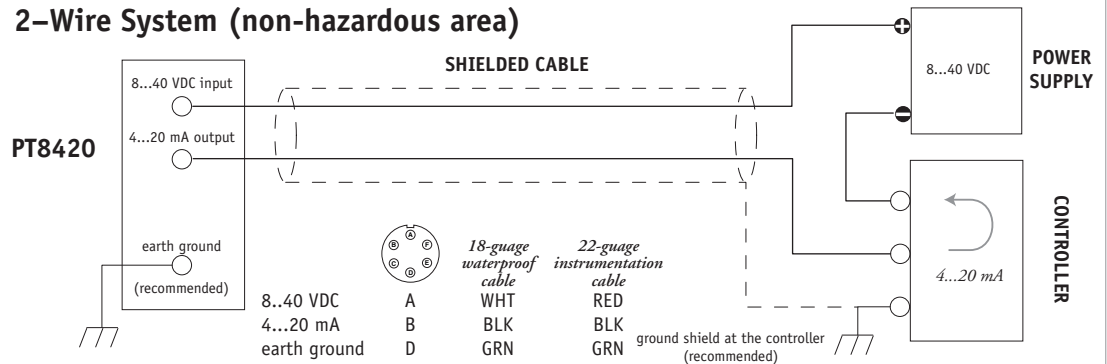
1. Mount transducer via the 4 feet to a flat solid surface.
2. Connect measuring cable to moving object.



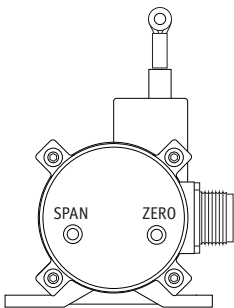
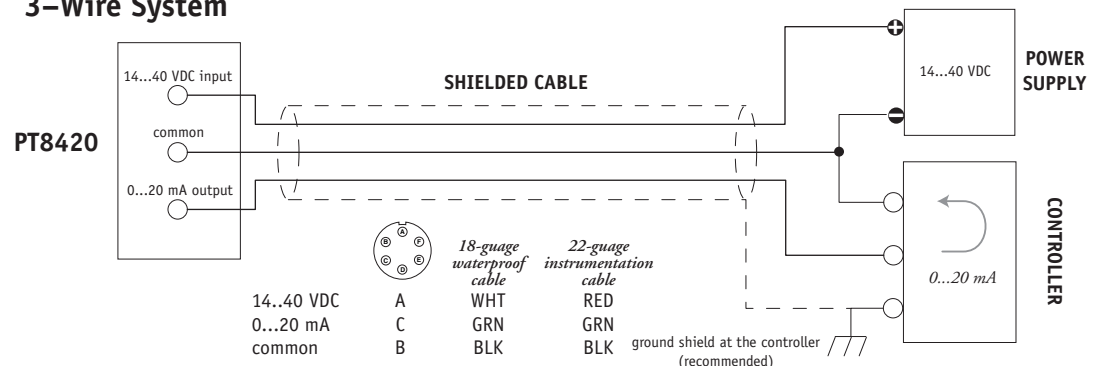
ELECTRICAL

3. Connect system wiring.
4. If desired, use the zero and span controls to calibrate to exact measurement range (see below).

2-Wire System (non-hazardous area)



3-Wire System



Changing Calibrated Range

- Remove Phillips-head cover screws to reveal zero and span trim pots
- Extend measuring cable to 0/4 mA position and adjust zero pot.
- Extend measuring cable to 20 mA position and adjust span pot
- Repeat steps ii and iii.
- Replace plugs.